

- 1
- 2
- 3
- 4
- 5
- 6
- 7
- 8
- 9
- 10
- 11
- 12
- 13
- 14
- 15
- 16
- 17
- 18

SPECIFICATION

Stainless Steel AISI 304 **NI**
matte **MT**

Threaded studs
Stainless Steel AISI 304
pressed-in

FEATURES AND APPLICATIONS

Plates for jointed hinges GN 7247.6 are designed with appropriate dimensions as accessories for jointed hinges GN 7241 (see page -), GN 7243 (see page -) and the GN 7247 (see page -).

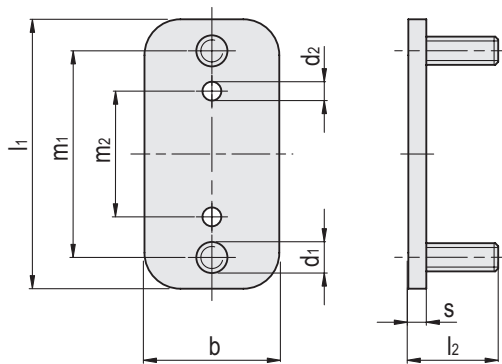
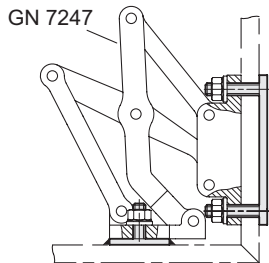
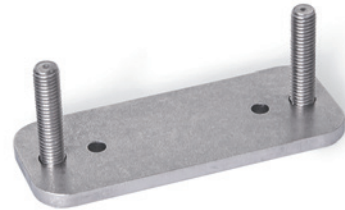
The Stainless Steel-Plates are fastened from the outside via through-holes in the housing wall or alternatively by welding to the inside of the wall. This results in effective protection against vandalism, and the outsides of the housing remain free of attachments that do not match the design or that should be avoided entirely in the interests of easy cleaning.

They make threaded holes, bolts and washers unnecessary during installation. This eliminates the labor-intensive pre-installation of such parts as well as the need to hold them in place during tightening or loosening.

The holes d2 receive tensioning or positioning pins, if necessary, making it easy to position the plates and the multiple-joint hinges.

ON REQUEST

- other threaded stud lengths
- other plate sizes
- other plate geometries



Conversion Table	
1 mm = 0.039 inch	
l1	
mm	inch
60	2.34
75	2.93

Code	Description	l1	l2	d1	d2	b	m1	m2	s	⚖
GN.72451	GN 7247.6-NI-60-20-MT	60	20	M 6	4	30	46	28	4	60
GN.72452	GN 7247.6-NI-60-25-MT	60	25	M 6	4	30	46	28	4	63
GN.72453	GN 7247.6-NI-60-30-MT	60	30	M 6	4	30	46	28	4	65
GN.72454	GN 7247.6-NI-75-20-MT	75	20	M 6	4	30	61	40	4	74
GN.72455	GN 7247.6-NI-75-25-MT	75	25	M 6	4	30	61	40	4	77
GN.72456	GN 7247.6-NI-75-30-MT	75	30	M 6	4	30	61	40	4	79